

2000  
Davis & Van Buren Counties, Iowa  
Iowa South Zone (1402)  
NAD\_83(1996)

Point Number: 159

Northing: 320105.22(Ft)      Easting: 2133085.80(Ft)

Northing: 97568.267(M)      Easting: 650165.852(M)

Elev: 691.08(Ft) NAVD\_88

Elev: 210.651(M) NAVD\_88      Ellip Ht: 177.561(M)      96C Geoid Ht: -33.090(M)

Latitude: 40-51-53.153365 N      Longitude: 91-43-07.079865 W

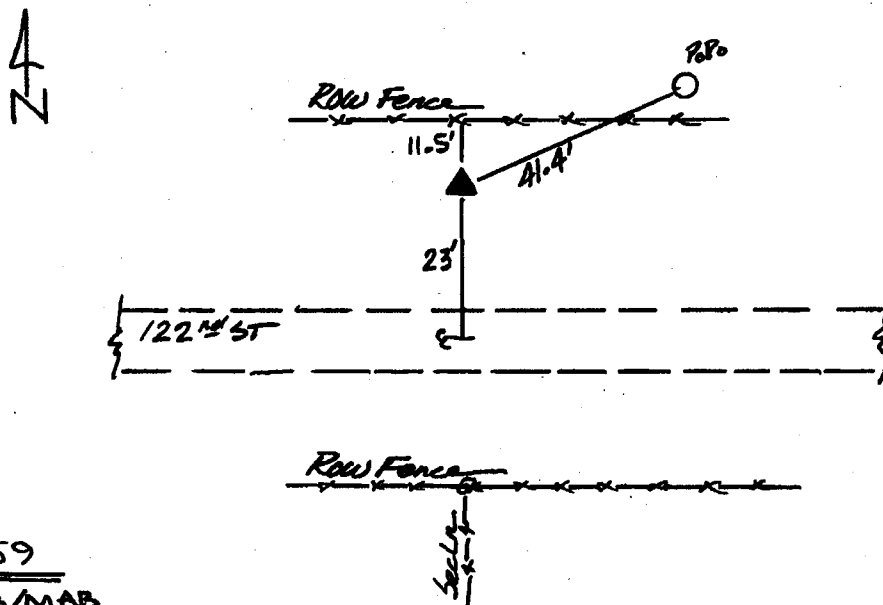
Theta: 1-10-24.20      Combination Factor: 0.99993762

Designation: VAN BUREN CO GPS CONTROL PT 2000-159

**Monument Type:** 5/8" dia driven aluminum rod with a 2-1/2" dia aluminum cap and permanent magnet encased in a 5" dia PVC pipe with an aluminum access cover.

**To Reach:** 25ft N of 122nd St on line with N/S Co. line fence near the East 1/4 cor Sec 13 T70N R8W.

Date Printed July 25, 2000



159  
BRs/MAS  
April 2000