

2000
Davis & Van Buren Counties, Iowa
Iowa South Zone (1402)
NAD_83(1996)

Point Number: 152

Northing: 325213.96(Ft) Easting: 2117075.56(Ft)

Northing: 99125.413(M) Easting: 645285.921(M)

Elev: 733.02(Ft) NAVD_88

Elev: 223.432(M) NAVD_88 Ellip Ht: 190.376(M) 96C Geoid Ht: -33.055(M)

Latitude: 40-52-46.810904 N Longitude: 91-46-34.106949 W

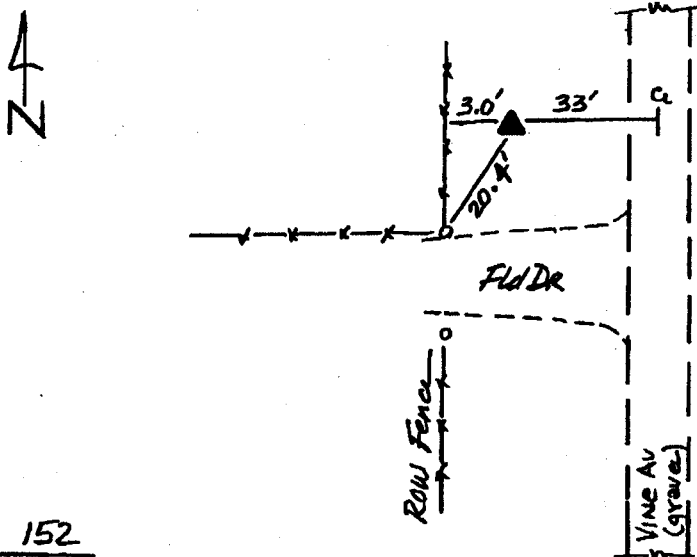
Theta: 1-08-07.83 Combination Factor: 0.99993412

Designation: VAN BUREN CO GPS CONTROL PT 2000-152

Monument Type: 5/8" dia driven aluminum rod with a 2-1/2" dia aluminum cap and permanent magnet encased in a 5" dia PVC pipe with an aluminum access cover.

To Reach: 30ft W of Vine Ave near the E 1/4 cor Sec 4 T70N R8W.

Date Printed July 25, 2000



152
BRS/MAB
APRIL 2000