

2000
Davis & Van Buren Counties, Iowa
Iowa South Zone (1402)
NAD_83(1996)

Point Number: 146

Northing: 226681.08(Ft)

Easting: 2103655.70(Ft)

Northing: 69092.529(M)

Easting: 641195.540(M)

Elev: 724.20(Ft) NAVD_88

Elev: 220.755(M) NAVD_88

Ellip Ht: 187.642(M)

96C Geoid Ht: -33.113(M)

Latitude: 40-36-35.953017 N

Longitude: 91-49-53.388716 W

Theta: 1-05-56.56

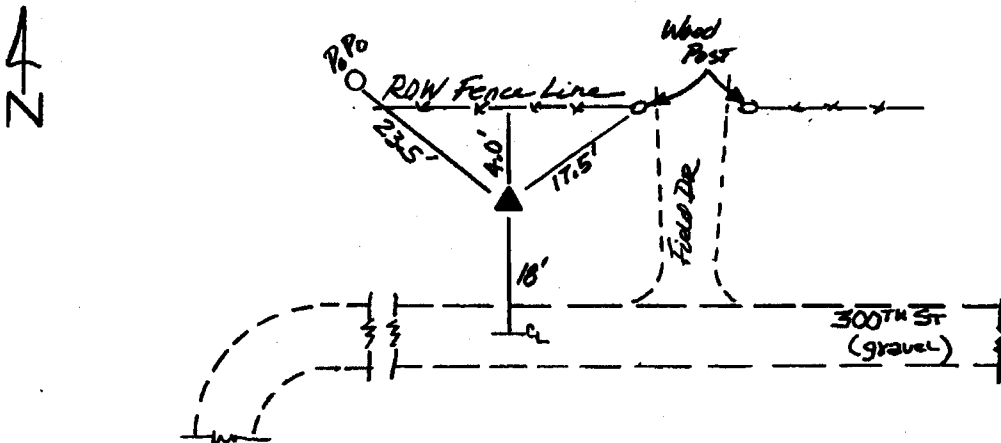
Combination Factor: 0.99997174

Designation: VAN BUREN CO GPS CONTROL PT 2000-146

Monument Type: 5/8" dia driven aluminum rod with a 2-1/2" dia aluminum cap and permanent magnet encased in a 5" dia PVC pipe with an aluminum access cover.

To Reach: 20ft N of 300th St., 250ft E of a gravel road to S near the SW cor Sec 7 T67N R8W.

Date Printed July 25, 2000



146
BRS/MAS
APRIL 2000