

2000
Davis & Van Buren Counties, Iowa
Iowa South Zone (1402)
NAD_83(1996)

Point Number: 123

Northing: 225015.36(Ft) Easting: 2007208.67(Ft)

Northing: 68584.818(M) Easting: 611798.427(M)

Elev: 775.08(Ft) NAVD_88

Elev: 236.249(M) NAVD_88 Ellip Ht: 203.322(M) 96C Geoid Ht: -32.926(M)

Latitude: 40-36-35.872804 N Longitude: 92-10-44.084153 W

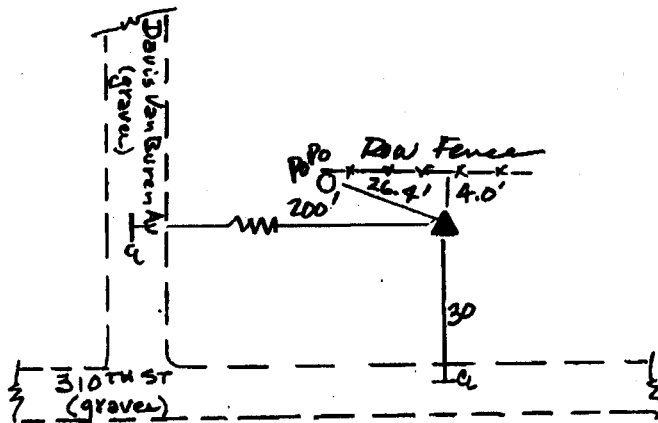
Theta: 0-52-12.73 Combination Factor: 0.99996928

Designation: DAVIS CO GPS CONTROL PT 2000-123

Monument Type: 5/8" dia driven aluminum rod with a 2-1/2" dia aluminum cap and permanent magnet encased in a 5" dia PVC pipe with an aluminum access cover.

To Reach: 30ft N of 310th St., 200ft E of Davis Van Buren Ave. near the SW cor Sec 7 T67N R11W.

Date Printed July 25, 2000



123

BRS/MAS
APRIL 2000