

2000  
Davis & Van Buren Counties, Iowa  
Iowa South Zone (1402)  
NAD\_83(1996)

Point Number: 133

Northing: 235284.27(Ft)      Easting: 2038981.89(Ft)

Northing: 71714.788(M)      Easting: 621482.923(M)

Elev: 773.32(Ft) NAVD\_88

Elev: 235.715(M) NAVD\_88      Ellip Ht: 202.715(M)      96C Geoid Ht: -33.000(M)

Latitude: 40-38-12.354342 N      Longitude: 92-03-49.978477 W

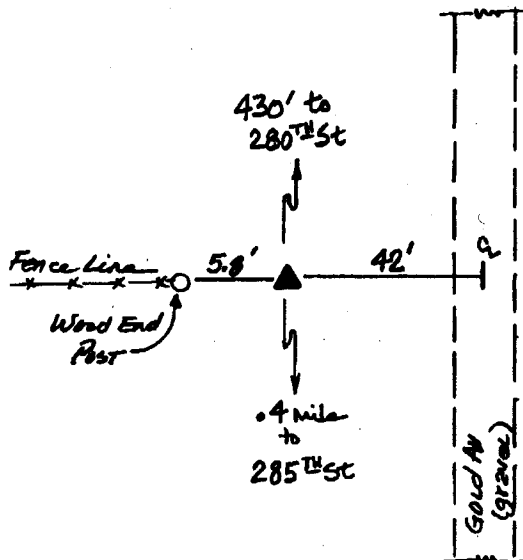
Theta: 0-56-45.50      Combination Factor: 0.99996470

Designation: VAN BUREN CO GPS CONTROL PT 2000-133

**Monument Type:** 5/8" dia driven aluminum rod with a 2-1/2" dia aluminum cap and permanent magnet encased in a 5" dia PVC pipe with an aluminum access cover.

**To Reach:** 40ft W of Gold Ave, approx. 430ft S of 280th St and on line with fence to W in the NE cor Sec 1 T67N R11W.

Date Printed July 25, 2000



133  
BRS/MAB  
APRIL 2000