

2000
Davis & Van Buren Counties, Iowa
Iowa South Zone (1402)
NAD_83(1996)

Point Number: 128

Northing: 299295.86(Ft) Easting: 2007230.22(Ft)

Northing: 91225.561(M) Easting: 611804.993(M)

Elev: 805.71(Ft) NAVD_88

Elev: 245.585(M) NAVD_88 Ellip Ht: 212.684(M) 96C Geoid Ht: -32.902(M)

Latitude: 40-48-49.770301 N Longitude: 92-10-29.131962 W

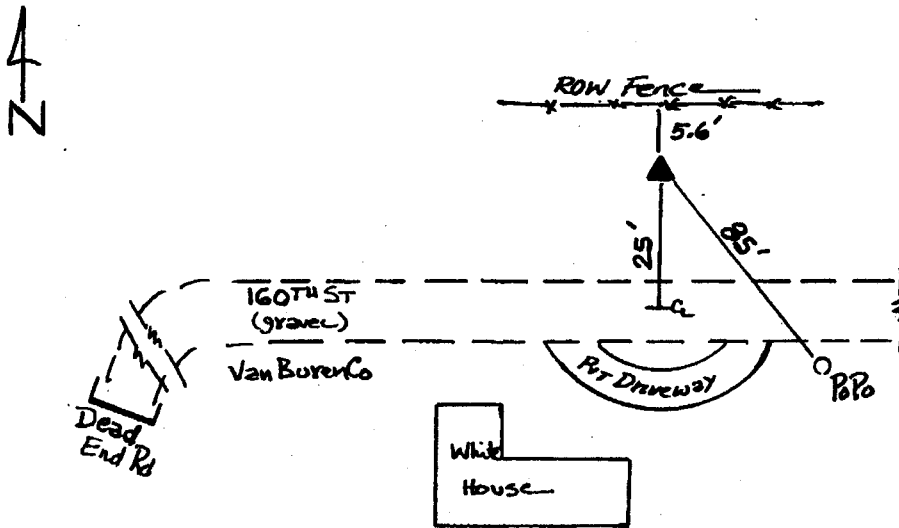
Theta: 0-52-22.58 Combination Factor: 0.99993768

Designation: DAVIS CO GPS CONTROL PT 2000-128

Monument Type: 5/8" dia driven aluminum rod with a 2-1/2" dia aluminum cap and permanent magnet encased in a 5" dia PVC pipe with an aluminum access cover.

To Reach: 25ft N of 160th St (Van Buren Co.), 125ft E of dead end of 160th St. in the SW quarter Sec 31 T70N R11W.

Date Printed July 25, 2000



128
BRS/MAB
APRIL 2000